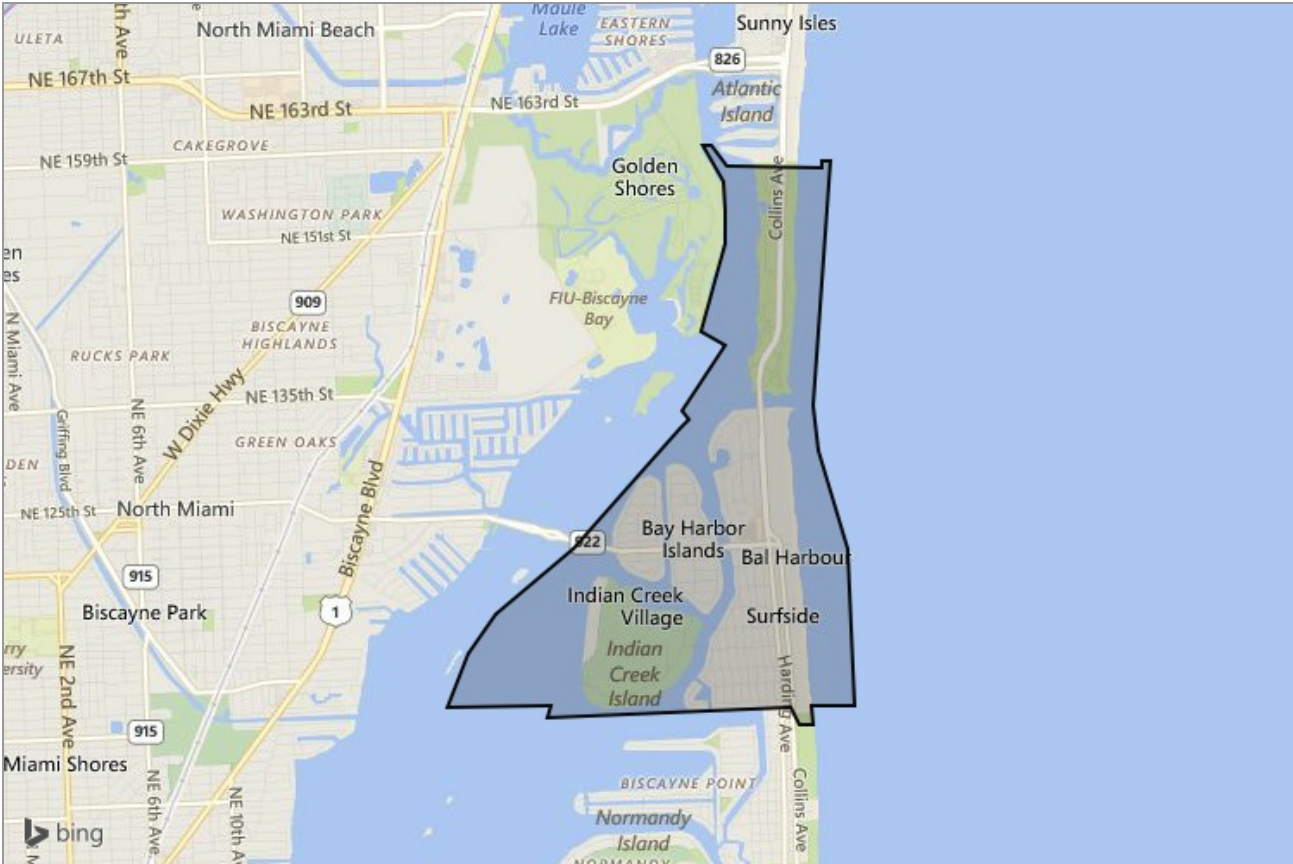




NEIGHBORHOOD REPORT

# Miami Beach, FL 33154

Prepared for Dear Prospective Customer,



Presented by  
**Christopher Lazaro**

Florida Real Estate License: BK3252123



Office: (305) 517-3086 x333 | Mbbile: (305) 878-2288 | Office: (800) 798-9192 x333 | Fax: (305) 521-8995

[chris@mii.miami](mailto:chris@mii.miami)  
<http://www.BeachBroker.Miami>

Metro International Investments  
100 Kings Point Drive  
Sunny Isles Beach, FL 33160

*I live & work on the Miami Beaches and it would be my pleasure to assist you in your real estate investment endeavors. Call me any time. Cheers, Christopher*

## Neighborhood: Housing Stats and Charts

	33154	Miami Beach	Miami-Dade County	Florida	United States
<b>Median Estimated Home Value</b>	\$665K	\$418K	\$252K	\$172K	\$319K
<b>Estimated Home Value 12-Month Change</b>	22%	2.7%	9.6%	8.1%	—
<b>Median List Price</b>	\$469K	\$309K	\$250K	\$217K	\$81.8K
<b>List Price 1-Month Change</b>	—	3.3%	—	1.9%	-1.7%
<b>List Price 12-Month Change</b>	—	3.4%	11.1%	14.2%	-0.8%
<b>Median Home Age</b>	43	45	39	32	—
<b>Own</b>	64%	39%	57%	68%	66%
<b>Rent</b>	36%	61%	43%	32%	34%
<b>\$ Value of All Buildings for which Permits Were Issued</b>	—	—	\$395M	\$7.82B	\$102B
<b>% Change in Permits for All Buildings</b>	—	—	64%	13%	2%
<b>% Change in \$ Value for All Buildings</b>	—	—	57%	15%	7%

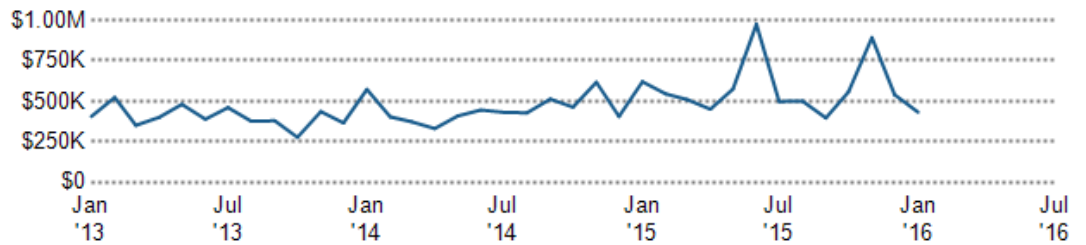
### Median Sales Price vs. Sales Volume

This chart compares the price trend and sales volume for homes in an area. Home prices typically follow sales volume, with a time lag, since sales activity is the driver behind price movements.

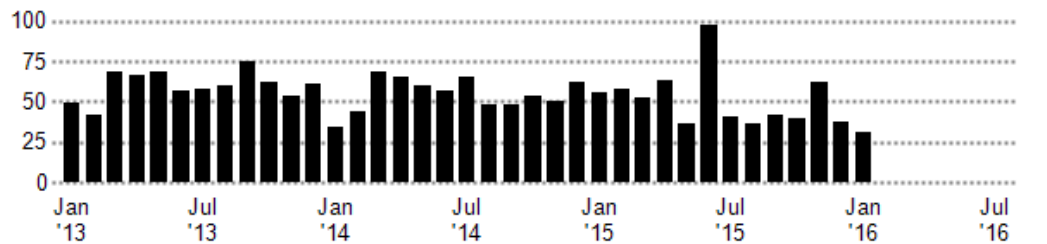
Data Source: Public records data

Update Frequency: Monthly

Median Sales Price



Sales Volume



## Median Listing Price vs. Listing Volume

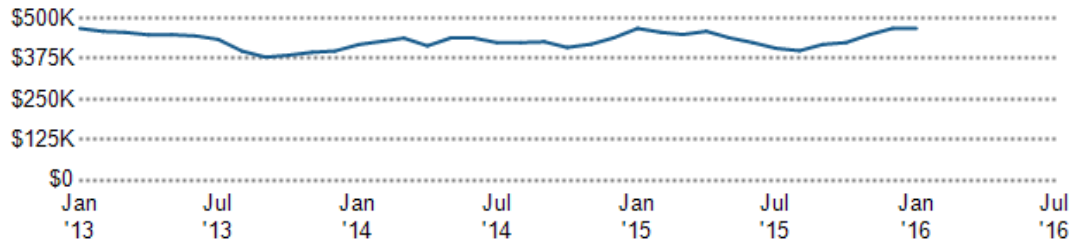
This chart compares the listing price and listing volume for homes in an area. Listing prices often follow listing volume, with a time lag, because supply can drive price movements.

Data Source: On- and off-market listings sources

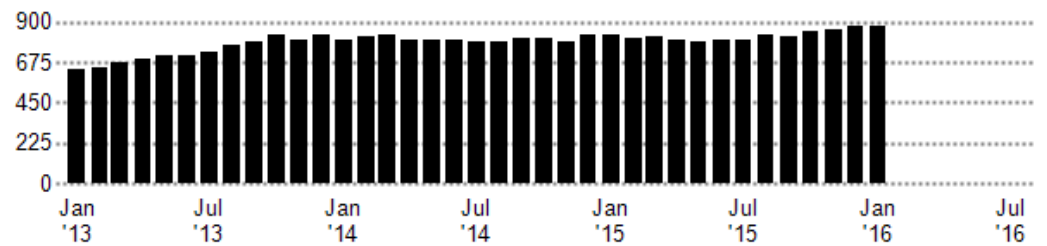
Update Frequency: Monthly

■ Median List Price  
■ Listing Volume

Median List Price



Listing Volume



## Price Range of Homes Sold

This chart shows the distribution of homes reported sold in the past six months within different price ranges in the area of your search. The amount shown for the subject property is sold data where available, or the property's estimated value when sales data are unavailable (such as a non-disclosure state) or provided in range format.

Data Source: Public records data

Update Frequency: Monthly

■ Sales Count By Price Range



## Price per Square Foot of Homes Sold

This chart shows the distribution of homes reported sold in the past six months at different prices per square foot in the area of your search.

Data Source: Public records data

Update Frequency: Monthly

■ Sales Count By Price Per Sq Ft



## Size of Homes Sold

This chart shows the distribution of homes reported sold in the past six months of different sizes in the area of your search.

Data Source: Public records data

Update Frequency: Monthly

■ Sales Count By Living Area



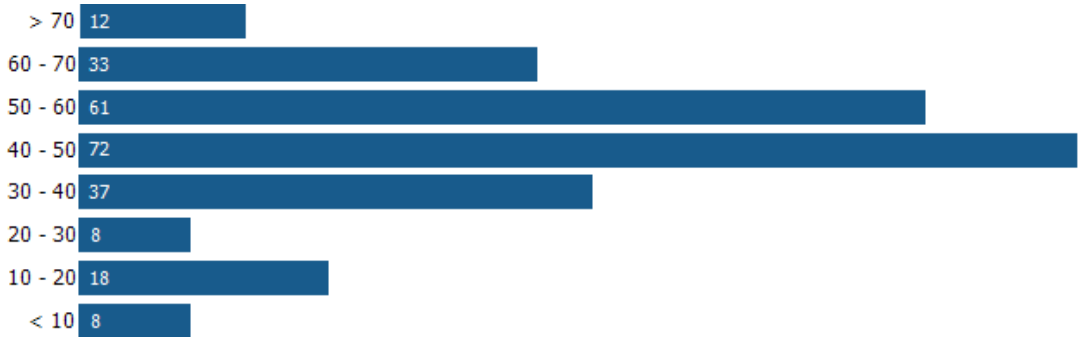
## Age Range of Homes Sold

This chart shows the distribution of homes reported sold in the past six months of different age ranges in the area of your search.

Data Source: Public records data

Update Frequency: Monthly

■ Sales Count by Age of House



## Number of Bedrooms in Homes Sold

This chart shows the distribution of homes reported sold in the past six months, according to the number of bedrooms, in the area of your search.

Data Source: Public records data

Update Frequency: Monthly

■ Sales Count by Bedroom



## Neighborhood: People Stats and Charts

	33154	Miami Beach	Miami-Dade County	Florida	United States
Population	15.1K	88.6K	2.51M	18.9M	309M
Population Density per Sq Mi	7.04K	11.6K	1.32K	352	—
Population Change since 2000	2.8%	0.6%	11.5%	18.2%	9.8%
Median Age	43	39	38	41	37
Male / Female Ratio	50%	53%	48%	49%	49%
High School Graduate	21%	19%	28%	30%	28%
2-Year Degree	22%	23%	24%	30%	29%
Bachelor Degree	27%	23%	17%	17%	18%
Post-graduate Degree	20%	20%	10%	9%	11%

### Population of Children by Age Group

This chart shows the distribution of the population of children by age range — from birth to 17 — in the area of your search.

Data Source: U.S. Census

Update Frequency: Annually

■ 33154



### Population of Adults by Age Group

This chart shows the distribution of the population of adults by age range — from 18 to 75-plus — in the area of your search.

Data Source: U.S. Census

Update Frequency: Annually

■ 33154



### Households With Children

This chart shows the distribution of households with children, categorized by marital status, in the area of your search.

Data Source: U.S. Census

Update Frequency: Annually

■ 33154



## Household Income Brackets

This chart shows annual household income levels within an area.

Data Source: U.S. Census

Update Frequency: Annually

■ 33154



## Presidential Voting Pattern

This chart shows how residents of a county voted in the 2014 presidential election.

Data Source: USElectionAtlas.org

Update Frequency: Annually



## Neighborhood: Economic Stats and Charts

	33154	Miami Beach	Miami-Dade County	Florida	United States
Income Per Capita	–	\$43,690	\$23,304	\$26,451	\$28,051
Median Household Income	\$61,097	\$43,321	\$43,464	\$47,309	\$53,046
Unemployment Rate	–	4.2%	5.8%	4.7%	5%
Unemployment Number	–	2.37K	76.9K	457K	7.9M
Employment Number	–	54.1K	1.26M	9.17M	150M
Labor Force Number	–	56.4K	1.33M	9.63M	158M

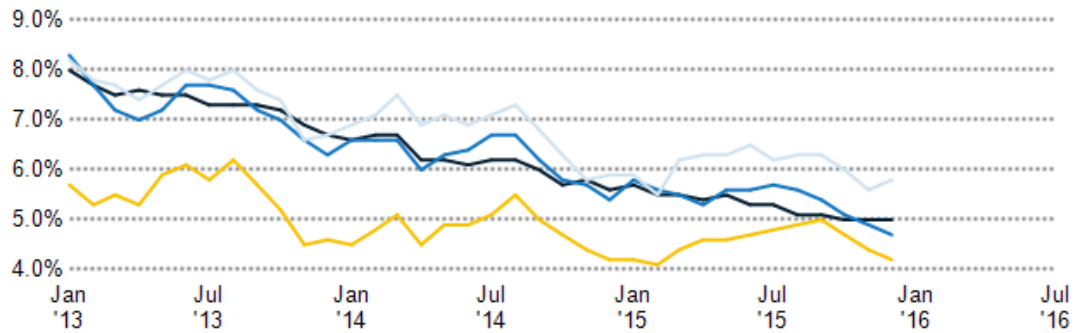
### Unemployment Rate

This chart shows the unemployment trend in the area of your search. The unemployment rate is an important driver behind the housing market.

Data Source: Bureau of Labor Statistics

Update Frequency: Monthly

- Miami Beach
- Miami-Dade County
- Florida
- United States



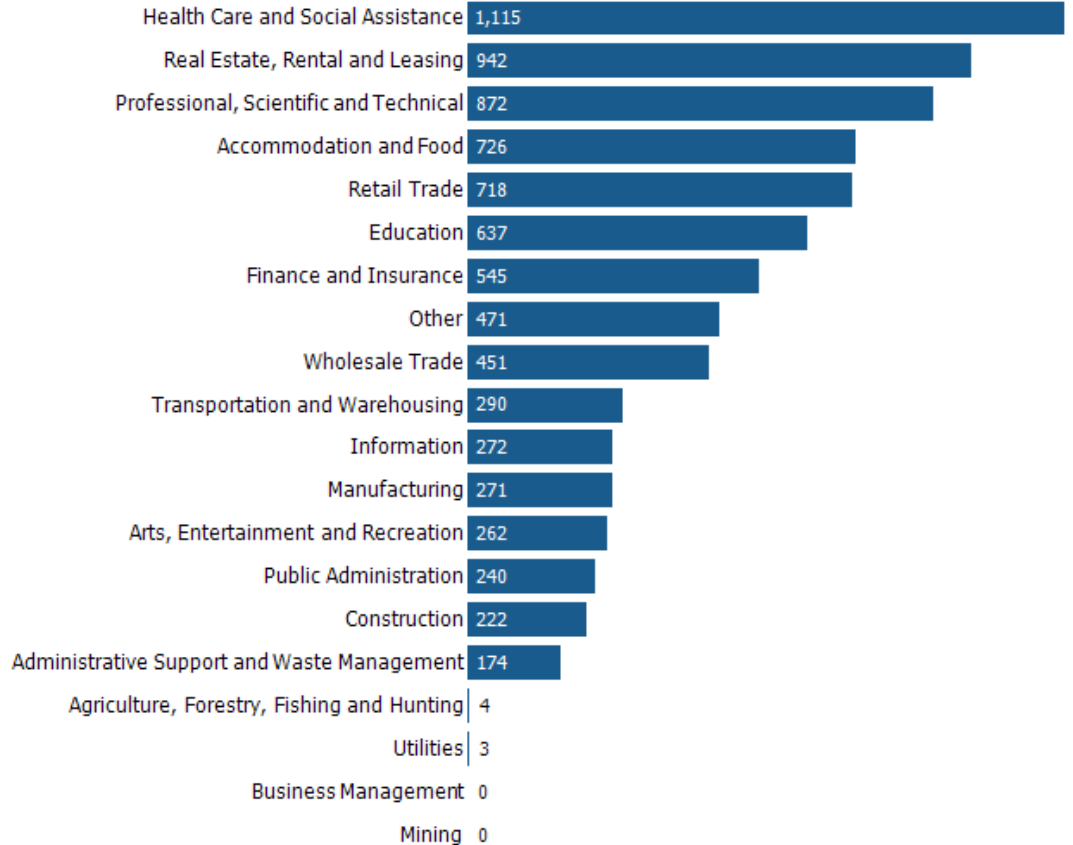
### Occupational Categories

This chart shows categories of employment within an area.

Data Source: U.S. Census

Update Frequency: Annually

■ 33154



## Neighborhood: Quality of Life Stats and Charts

### Quality of Life in 33154

	33154	Miami Beach	Miami-Dade County	Florida	United States
Elevation (in feet)	5	6	5	–	–
Annual Rainfall (in inches)	60	57.59	59.83	56.46	–
Annual Snowfall (in inches)	0	0	0	0.06	–
Days of Full Sun (per year)	83	83	83	98	–
Travel Time to Work (in minutes)	–	25	29	26	25
Water Quality - Health Violations	–	–	0	–	–
Water Quality - Monitoring and Report Violations	–	–	11.86	–	–
Superfund Sites	0	0	15	85	2,302
Brownfield Sites	No	No	Yes	Yes	Yes

### Average Commute Time

This chart shows average commute times to work, in minutes, by percentage of an area's population.

Data Source: U.S. Census

Update Frequency: Annually

■ 33154



### How People Get to Work

This chart shows the types of transportation that residents of the area you searched use for their commute.

Data Source: U.S. Census

Update Frequency: Annually



### Average Monthly Temperature

This chart shows average temperatures in the area you searched.

Data Source: NOAA

Update Frequency: Annually





## Walkability Scores (out of 5)

This neighborhood or ZIP code is rated for walking access to general points of interest, reflected in the overall score, plus amenities (such as retail stores) and leisure (such as restaurants and parks). Other factors considered in the scores are street types, weather, public transportation and population density.

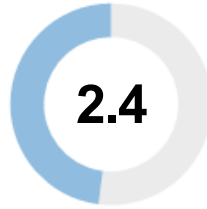
Data Source: Maponics

Update Frequency: Quarterly

Overall Score



Amenity Score



Leisure Score

